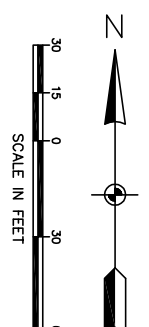
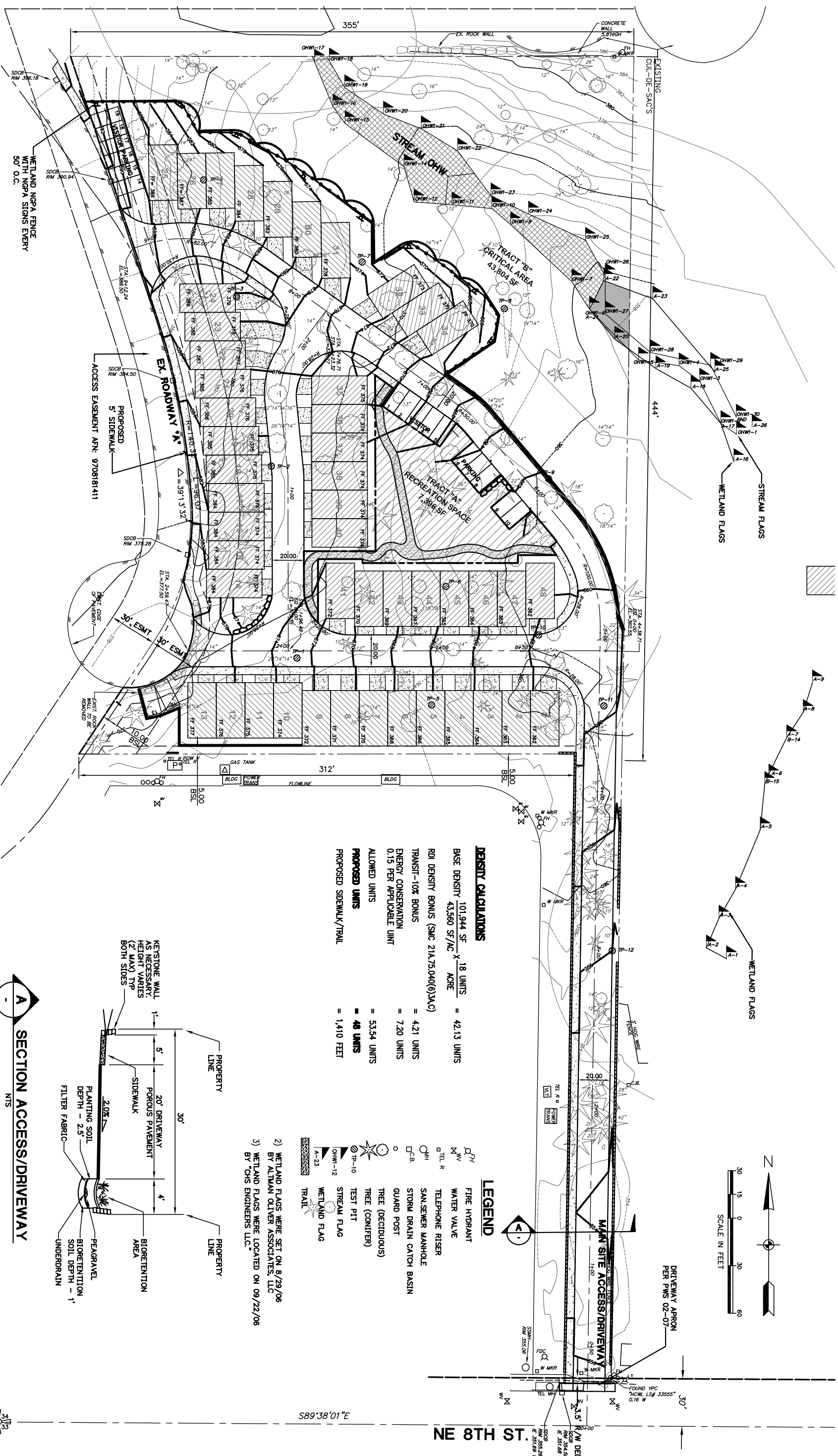


A PORTION OF SW 1/4 OF SW 1/4 OF SECTION 27, TOWNSHIP 25 NORTH, RANGE 6 EAST, W.M. KING COUNTY WASHINGTON

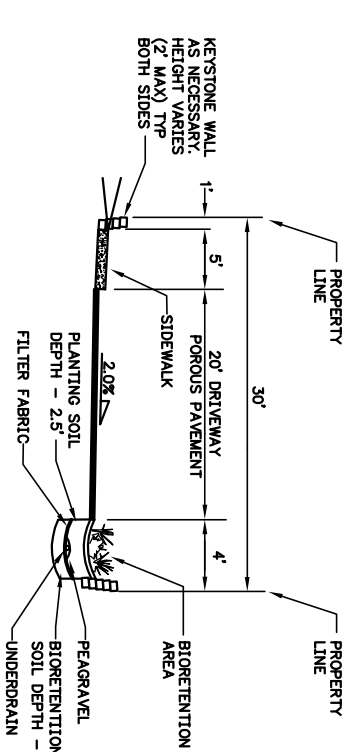


DENSITY CALCULATIONS

BASE DENSITY	$\frac{101,944 \text{ SF}}{43,560 \text{ SF/AC}} \times 18 \text{ UNITS/ACRE}$	= 42.13 UNITS
RDI DENSITY BONUS (SMC 21A.75.04(6)(3)(A)(C))		
TRANSIT-10% BONUS	= 4.21 UNITS	
ENERGY CONSERVATION 0.15 PER APPLICABLE UNIT	= 7.20 UNITS	
ALLOWED UNITS	= 53.54 UNITS	
PROPOSED UNITS	= 48 UNITS	
PROPOSED SIDEWALK/TRAIL	= 1,410 FEET	

- LEGEND**
- F.H. FIRE HYDRANT
 - W.V. WATER VALVE
 - TEL. R. TELEPHONE RISER
 - S.M. SANSEWER MANHOLE
 - S.C.B. STORM DRAIN CATCH BASIN
 - G.P. GUARD POST
 - T.D. TREE (DECIDUOUS)
 - T.C. TREE (CONIFER)
 - T.P. TEST PIT
 - S.F. STREAM FLAG
 - W.F. WETLAND FLAG
 - A-23 TRAIL

- 1) WETLAND FLAGS WERE SET ON 8/29/06 BY ALTMAN OLIVER ASSOCIATES, LLC
- 2) WETLAND FLAGS WERE LOCATED ON 09/22/06 BY "CHS ENGINEERS LLC."



SECTION ACCESS/DRIVEWAY

No.	Date	By	Ckd.	Appr.	Revision
CHS ENGINEERS LLC 12807 BEL-RED ROAD SUITE 101 BELLEVUE, WA 98005-2500 TEL (425) 637-3693 FAX (425) 637-3694					
Drawn By	Date	Checked By	Date		
DJ	11/09	AMC/LMC	03/10		
Designed By	Date	Approved By	Date		
AMC/KW	11/09	LMC	03/10		
SAMMAMISH TOWNHOMES SITE PLAN					
Sheet	2				
Of	8				