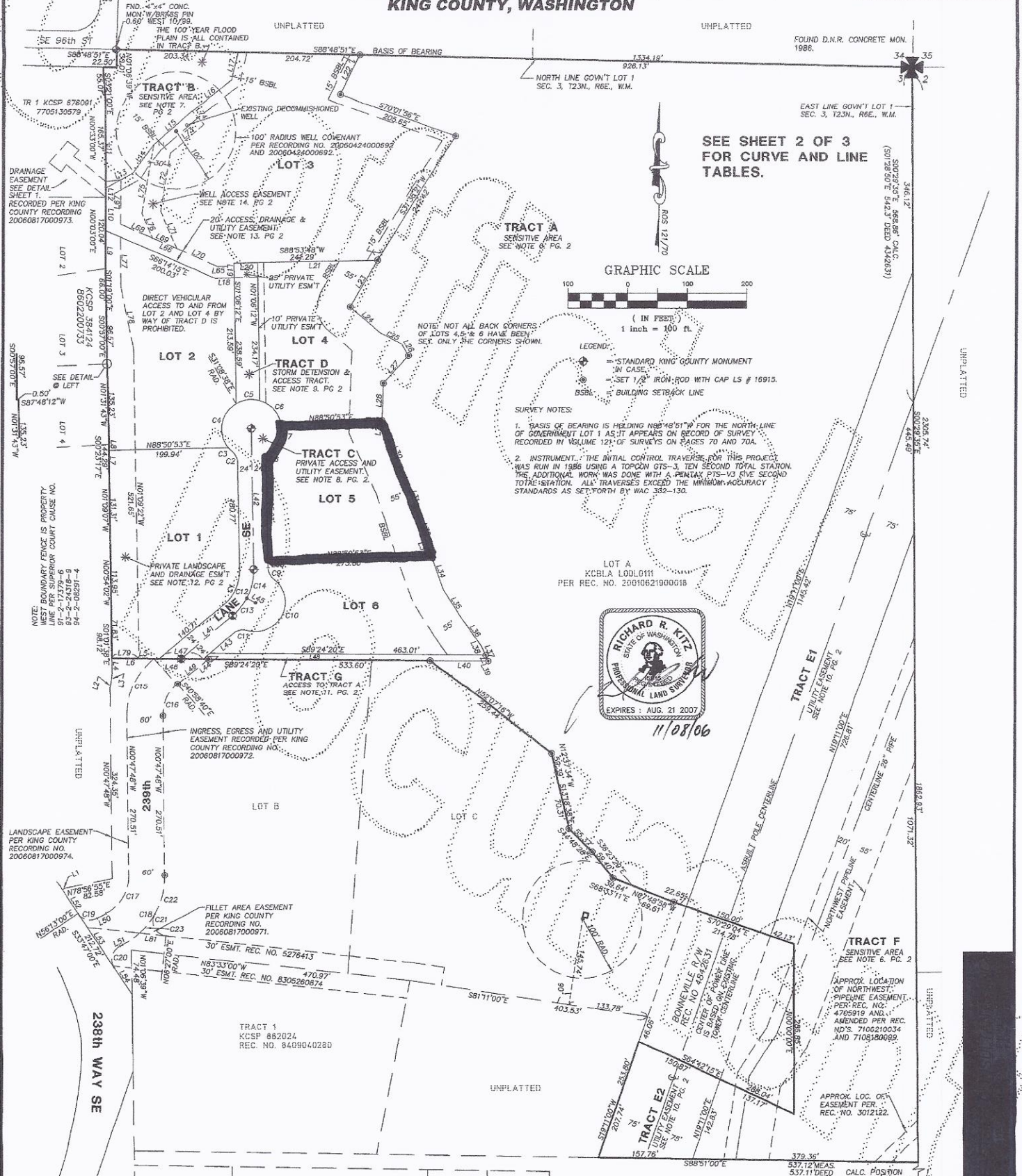
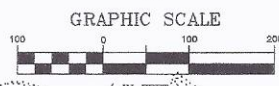


**GOV'T LOTS 1 & 2 & SW1/4 NE1/4 & SE1/4 NE1/4 SEC. 3, T.23N., R.6E., W.M.
KING COUNTY, WASHINGTON**

VOLUME PAGE
239/003



SEE SHEET 2 OF 3
FOR CURVE AND LINE
TABLES.



- LEGEND:
- STANDARD KING COUNTY MONUMENT IN CASE
 - SET 1/8" IRON ROD WITH CAP LS # 16915.
 - BSBL — BUILDING SETBACK LINE
- SURVEY NOTES:
1. BASIS OF BEARING IS HOLDING $N88^{\circ}48'51''E$ FOR THE NORTH-LINE OF GOVERNMENT LOT 1 AS IT APPEARS ON RECORD OF SURVEY RECORDED IN VOLUME 121 OF SURVEYS ON PAGES 70 AND 70A.
 2. INSTRUMENT: THE INITIAL CONTROL TRAVERSE FOR THIS PROJECT WAS RUN IN 1986 USING A TOPCON GTS-3, TEN SECOND TOTAL STATION. THE ADDITIONAL WORK WAS DONE WITH A PENTAX P75-V3 FIVE SECOND TOTAL STATION. ALL TRAVERSES EXCEED THE MINIMUM ACCURACY STANDARDS AS SET FORTH BY WAC 352-130.

