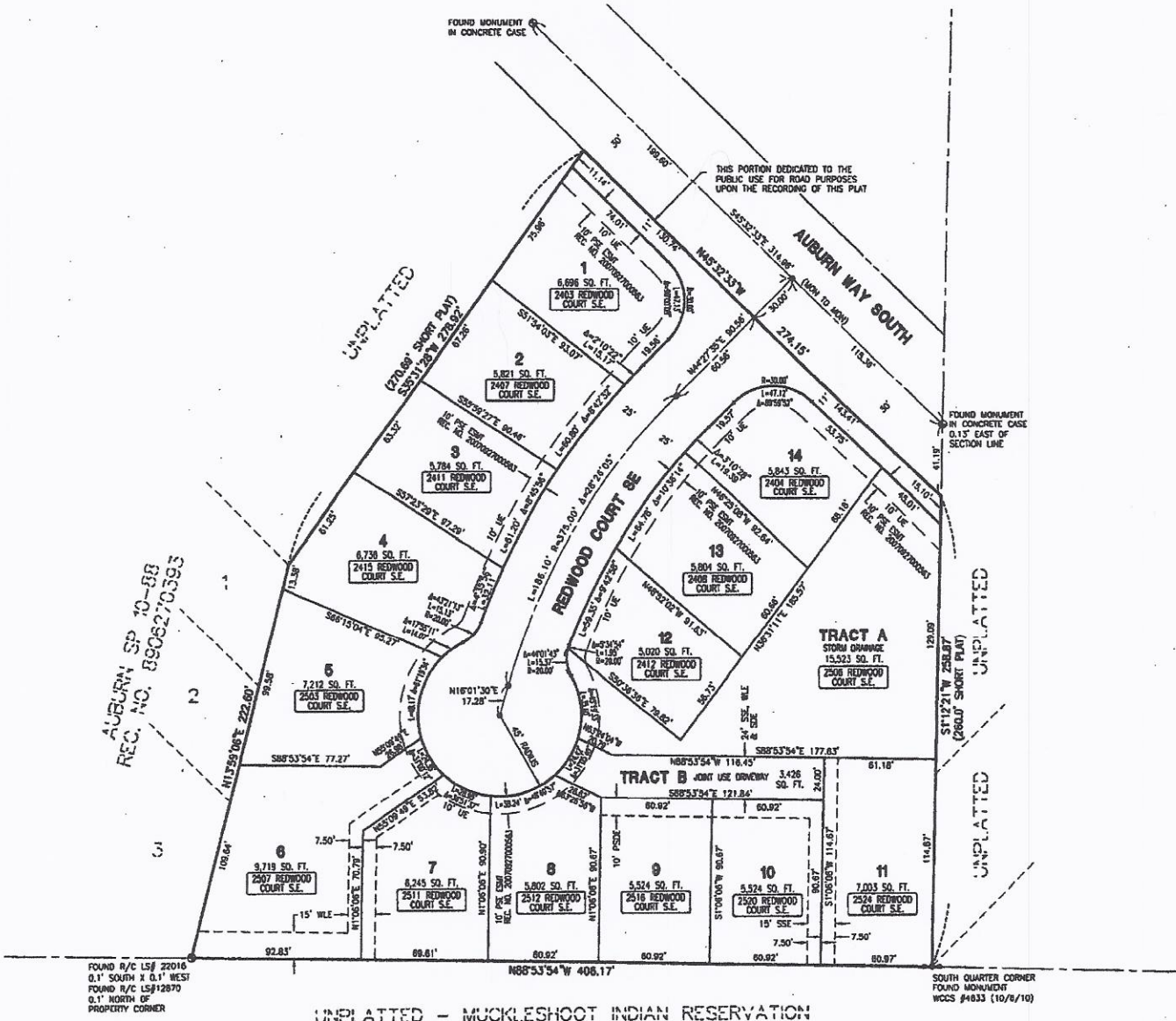


LAWSON PLACE

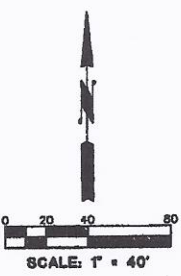
A REPLAT OF LOTS 1 & 2, CITY OF AUBURN SHORT PLAT NO. SP-5-77
BEING A PORTION OF THE SE1/4 OF THE SW1/4
SECTION 21, TOWNSHIP 21 NORTH, RANGE 5 EAST, WILLAMETTE MERIDIAN
CITY OF AUBURN, KING COUNTY, WASHINGTON



FOUND R/C LSF 22016
0.1' SOUTH x 0.1' WEST
FOUND R/C LSF 12870
0.1' NORTH OF
PROPERTY CORNER

SOUTH QUARTER CORNER
FOUND MONUMENT
WCCS #4833 (10/6/10)

UNPLATTED - MUCKLESHOOT INDIAN RESERVATION



- LEGEND:**
- FOUND QUARTER CORNER AS NOTED
 - ⊙ FOUND MONUMENT AS NOTED
 - CITY OF AUBURN STANDARD ROAD MONUMENT TO BE SET AS CONSTRUCTION IS COMPLETED
 - UE UTILITY EASEMENT
SEE "EASEMENT PROVISIONS" NOTE 1 ON SHEET 2
 - SSE PUBLIC SANITARY SEWER EASEMENT
SEE "CITY OF AUBURN EASEMENT PROVISIONS" ON SHEET 2
 - WLE PUBLIC WATERLINE EASEMENT
SEE "CITY OF AUBURN EASEMENT PROVISIONS" ON SHEET 2
 - SDE PUBLIC STORM DRAINAGE EASEMENT
SEE "CITY OF AUBURN EASEMENT PROVISIONS" ON SHEET 2
 - PSDE PRIVATE STORM DRAINAGE EASEMENT
SEE "EASEMENT PROVISIONS" NOTE 2 ON SHEET 2
 - (SHORT PLAT) CITY OF AUBURN SHORT PLAT SP-5-77
RECORDED UNDER REC. NO. 7705040650

CITY OF AUBURN FILE NO. PL110-0009



Barghausen Consulting Engineers, Inc.
Civil Engineering, Land Planning, Surveying, Environmental Services
18215 72nd Avenue South Kent, WA 98032
Telephone: (425) 251-6222 Fax: (425) 251-8782

SE1/4 OF SW1/4, SEC. 21, T21N-R5E, W.M.
SHEET 3 OF 3

JOB NO. 14317

File:\14008a\14317\runway\sheet\14317p03.dwg Date/Time: 1/24/2011 7:01 AM RWASOON

2502/2011/01