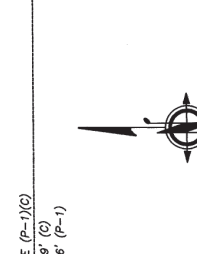
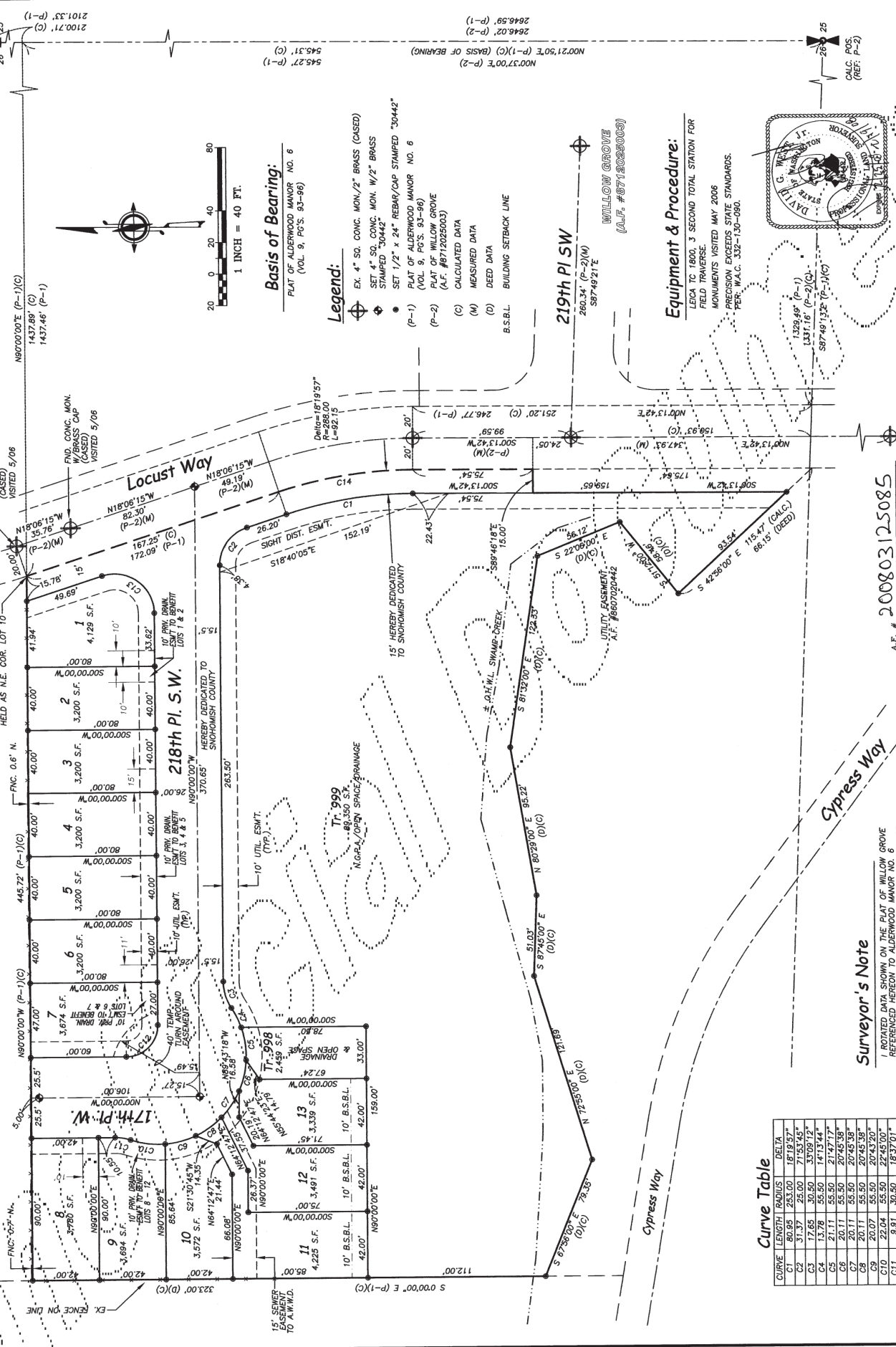


# Locust Grove

S.W. 1/4, N.E. 1/4, SECTION 35, TOWNSHIP 27 NORTH, RANGE 4 EAST, W.M.  
 SNOHOMISH COUNTY, WASHINGTON  
 Project File No: 06-127885 SD

BLOCK 11  
 ALDERWOOD MANOR NO. 6  
 (VOL. 9, PGS. 83-96)



**Basis of Bearing:**  
 PLAT OF ALDERWOOD MANOR NO. 6  
 (VOL. 9, PGS. 83-96)

- Legend:**
- EX. 4" SQ. CONC. MON./2" BRASS (CASED)
  - SET 4" SQ. CONC. MON. W/2" BRASS STAMPED "30442"
  - SET 1/2" x 24" REBAR/CAP STAMPED "30442"
  - PLAT OF ALDERWOOD MANOR NO. 6 (VOL. 9, PGS. 83-96)
  - PLAT OF WILLOW GROVE (A.F. #8712025003)
  - (C) CALCULATED DATA
  - (M) MEASURED DATA
  - (D) DEED DATA
  - B.S.B.L. BUILDING SETBACK LINE

**Equipment & Procedure:**  
 LEICA TO 1800, 3 SECOND TOTAL STATION FOR FIELD TRAVERSE  
 MONUMENTS VISITED MAY 2006  
 PRECISION EXCEEDS STATE STANDARDS.  
 PER W.A.C. 352-130-060.

**Surveyor's Note**  
 I ROTATED DATA SHOWN ON THE PLAT OF WILLOW GROVE REFERENCED HEREON TO ALDERWOOD MANOR NO. 6 USING THE MONUMENT BEARINGS ON THE MONUMENTS LOCATED ON LOCUST WAY, WHICH WERE USED TO CONTROL THIS SURVEY.

**Curve Table**

CURVE	LENGTH	RADIUS	DELTA
C1	60.95	253.00	181°19'57"
C2	31.37	25.00	71°53'45"
C3	17.65	30.50	37°09'12"
C4	13.78	55.50	14°13'44"
C5	21.11	55.50	21°47'38"
C6	20.11	55.50	20°45'38"
C8	20.11	55.50	20°45'38"
C9	20.07	55.50	20°43'20"
C10	22.04	55.50	22°45'00"
C11	9.91	30.50	18°37'01"
C12	31.42	20.00	90°00'00"
C13	47.17	25.00	100°06'15"
C14	85.75	288.00	181°19'57"

JOB NO: 2006-06  
 DATE: 2/13/08  
 SCALE: 1"=50'  
 SHEET/OF: 3/4

DRAWN BY: D.G.W. Jr.  
 CHECKED BY: D.G.W. Jr.

**The West Group, Inc.**  
 Professional Land Surveyors & Planners  
 426-252-7088 Office  
 426-868-7463 Fax  
 2120-Hewlett Ave.  
 Everett, Wa. 98501

A.F. # 200803125085  
 S.W. 1/4, N.E. 1/4, SECTION 28 TOWNSHIP 27 NORTH, RANGE 4 EAST, W.M.