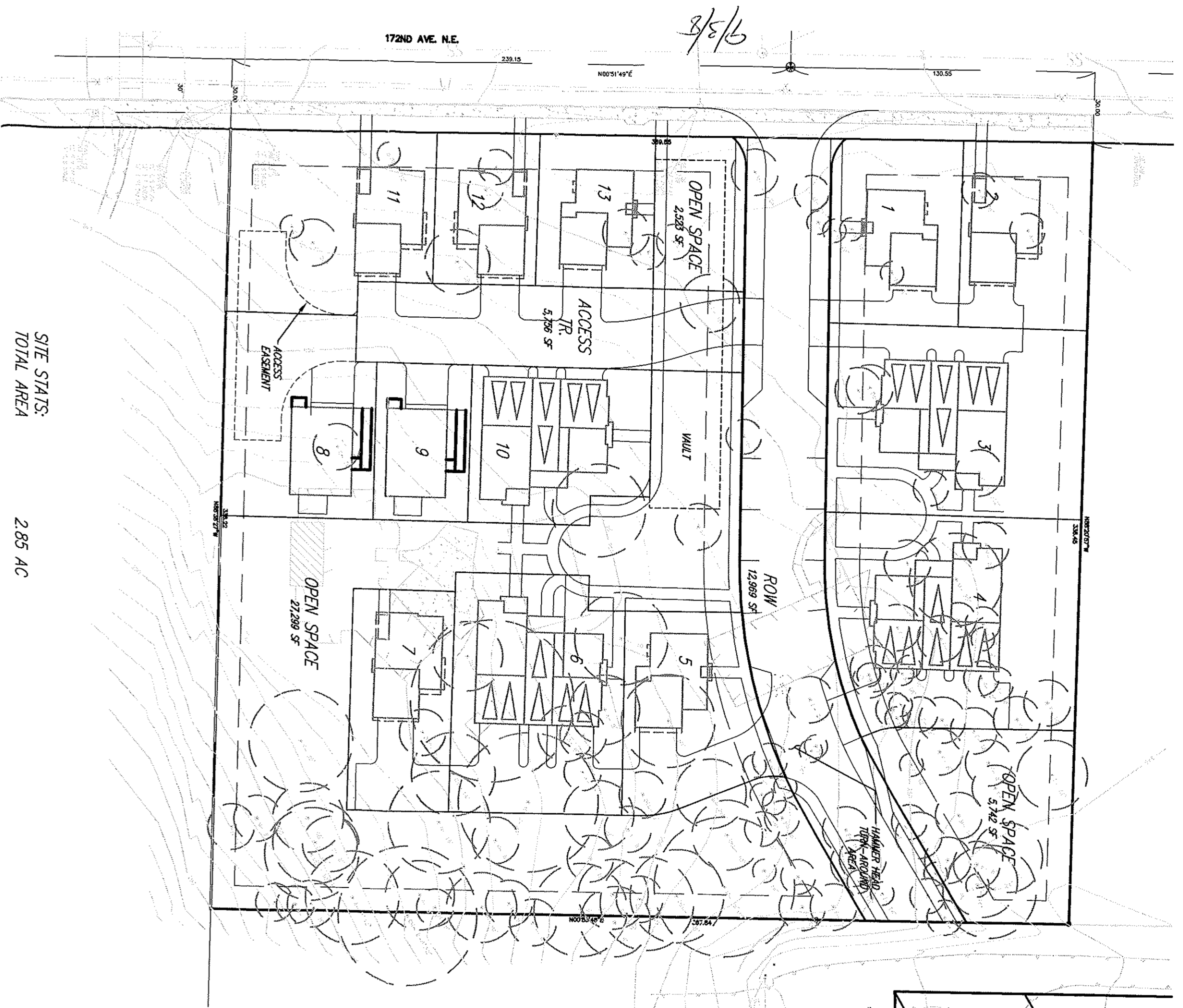


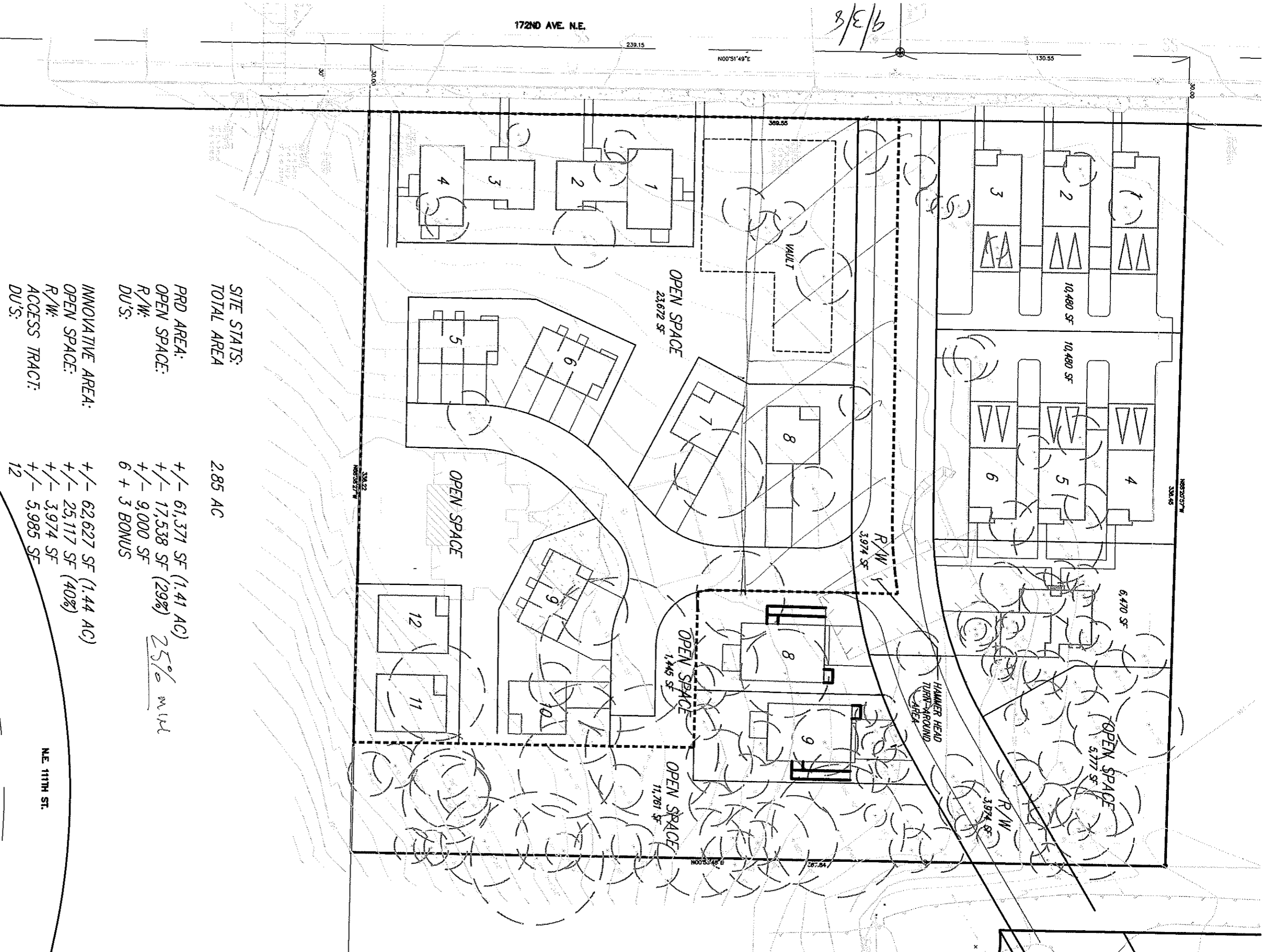
9/3/8

172ND AVE. N.E.



SITE STATS:
TOTAL AREA

2.85 AC



8/E/6

SITE STATS:
TOTAL AREA 2.85 AC

PRD AREA:
OPEN SPACE:
R/W:
DU'S:

+/- 61,371 SF (1.41 AC)
+/- 17,538 SF (29%) 25% MILD
+/- 9,000 SF
6 + 3 BONUS

INNOVATIVE AREA:
OPEN SPACE:
R/W:
ACCESS TRACT:
DU'S:

+/- 62,627 SF (1.44 AC)
+/- 25,117 SF (40%)
+/- 3,974 SF
+/- 5,985 SF
12

